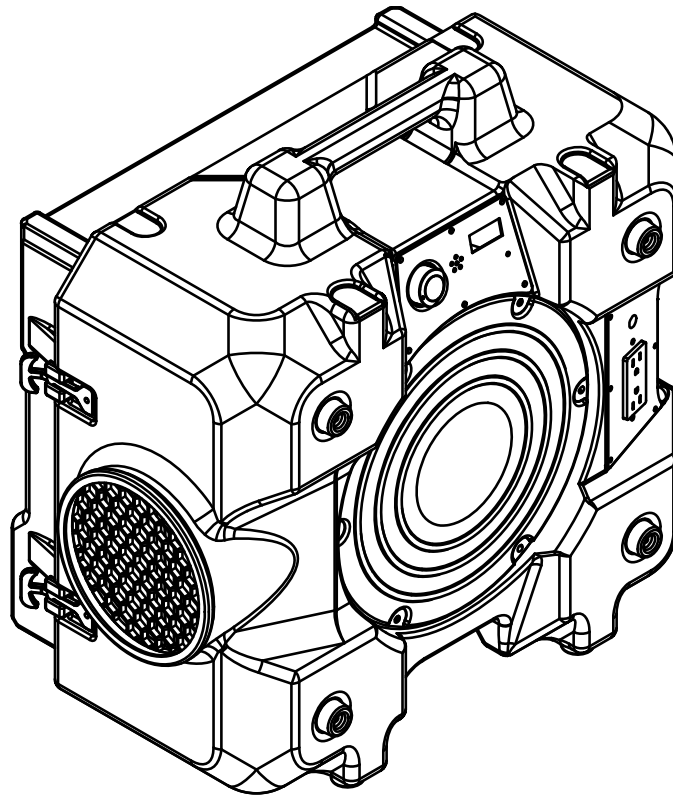


HEPA Air Scrubber



Customer Service Email: service@colzer.com

Office Website: <https://www.colzersmart.com>

Register Warranty Service: [colzersmart.com/vip](https://www.colzersmart.com/vip)

The AF500 HEPA Air Scrubber is a portable filtration system that removes airborne particles including mold, pet dander, dust, pollen, drywall dust, and other miscellaneous debris as small as 0.3 microns. The AF500 utilizes up to 3 stages of filtration including a pre-filter, optional 2nd stage, and a HEPA filter. The AF500 will create cleaner air in any environment. The pre-filter and second stage filter capture larger particles and the HEPA filter captures smaller particles.

WARNINGS

- Do not move or carry the Air Scrubber while it is operating. When the Air Scrubber is operating, the powerful airflow can cause unpredictable movement.
- NEVER allow children to play with or around the Air Scrubber.
- Do not alter or modify your Air Scrubber in any way. Use only replacement parts authorized by Modifications or use of unauthorized parts could create a hazard and will void your warranty.
- Store the Air Scrubber in a clean, dry environment. Do not store outdoors or allow water inside the unit's motor. If the motor becomes wet, allow it to thoroughly dry before use.
- The Air Scrubber should never be operated near water as it will create a risk of serious injury from electrical shock.
- Handle unit with care to avoid causing damage or injury.
- The Air Scrubber should always be operated on a flat surface. Do not operate where unit could fall, or on slippery surfaces, as this could increase the chance of injury, fire, or electrical shock.
- Keep all liquids from being drawn into the Air Scrubber and never operate unit without factory installed safety inlet and outlet grills in place.
- Do not use the Air Scrubber near combustible gas, or hot air as unit could melt and cause a fire or electrical hazard.
- Do not take the Air Scrubber apart or repair it unless you are qualified to do so. Never repair or service unit while Air Scrubber is plugged in.
- Make sure the air intake and outlet are free from all materials and away from obstructions, as any restrictions may cause the Air Scrubber to overheat and cause a shock or fire hazard.
- Unplug the Air Scrubber before performing any service or changing filters.
- Do not stack more than 2 units high in order to avoid a tipping hazard – falling equipment can cause bodily harm.

OPERATION

- 1) Place the Air Scrubber upright on a level and stable surface with the handle up.
- 2) Remove the dust cover.
- 3) Plug the Air Scrubber into a grounded 115 volt grounded outlet with the correct voltage and amperage. For maximum protection against electrical shock, ALWAYS use a circuit that is protected by a ground fault circuit interrupter. If you are unsure about the outlet, check with a qualified electrician or service person. Do not use an adapter or extension cord.
- 4) To switch the unit on, locate the control panel and turn the variable speed switch clockwise to the desired speed setting. Check that the Air Scrubber operates properly before leaving it unattended.
- 5) Operate unit until area is clear of unwanted contaminants or until filters need to be changed. The control panel has a filter change light which illuminates when the HEPA filter needs to be changed. See section on changing filters for instructions.

AUXILIARY/GFCI OUTLET/DAISY-CHAIN

You can interconnect (“daisy-chain”) up to three AF500s to customize your air filtration needs. The GFCI will “trip” if it detects a sudden “ground fault,” or overload and interrupt the electric current. When the GFCI “trips,” unplug the unit and look for potential hazards such as standing water, frayed cords, or anything that would cause a dangerous electrical problem. If such a situation exists, plug the AF500 into a different outlet and then push the “reset” button which is located between the 2 outlets on the GFCI. If the unit will not operate check the circuit breaker section below.

CIRCUIT BREAKER SWITCH

The AF500 is equipped with a circuit breaker switch to protect the Air Scrubber. The switch is located directly above the GFCI outlet and cuts off power to the unit when it detects an unsafe amount of electricity passing through the unit. If the switch “trips,” unplug the unit and look for potential hazards or anything that may be creating an overload situation. “Reset” breaker by pushing button in and continue normal operation.

HOURCOUNTER SETUP

The AF500 is equipped hour counter button to shut off the machine automatically after 1/2/4/8 Hours. To set the function, you need to turn on the machine, then press the Hour Counter button on the control panel. ("1h" is machine will shut off in hour, "2h" is 2 hours, "4h" is 4 hours, "8h" is 8 hours)

AIR QUALITY LIGHT

The AF500 is equipped with air quality light to show the air quality of the environment.
RED means the air is polluted, need to use AF500 to clean the air asap.
YELLOW means the air quality is not good, keep the AF500 on.
GREEN means the air quality is good, AF500 can be turned off.

CHANGING FILTERS

WARNING: CONTAMINATION HAZARD

Always wear NIOSH compliant protective gear when changing filters and dispose of used filters according to your local regulations.

Filters should be changed after every remediation job and whenever the filter change indicator light comes on. The unit should also be cleaned after each job to prevent cross-contamination.

Make sure the unit is dry before installing clean filters.

To change filters:

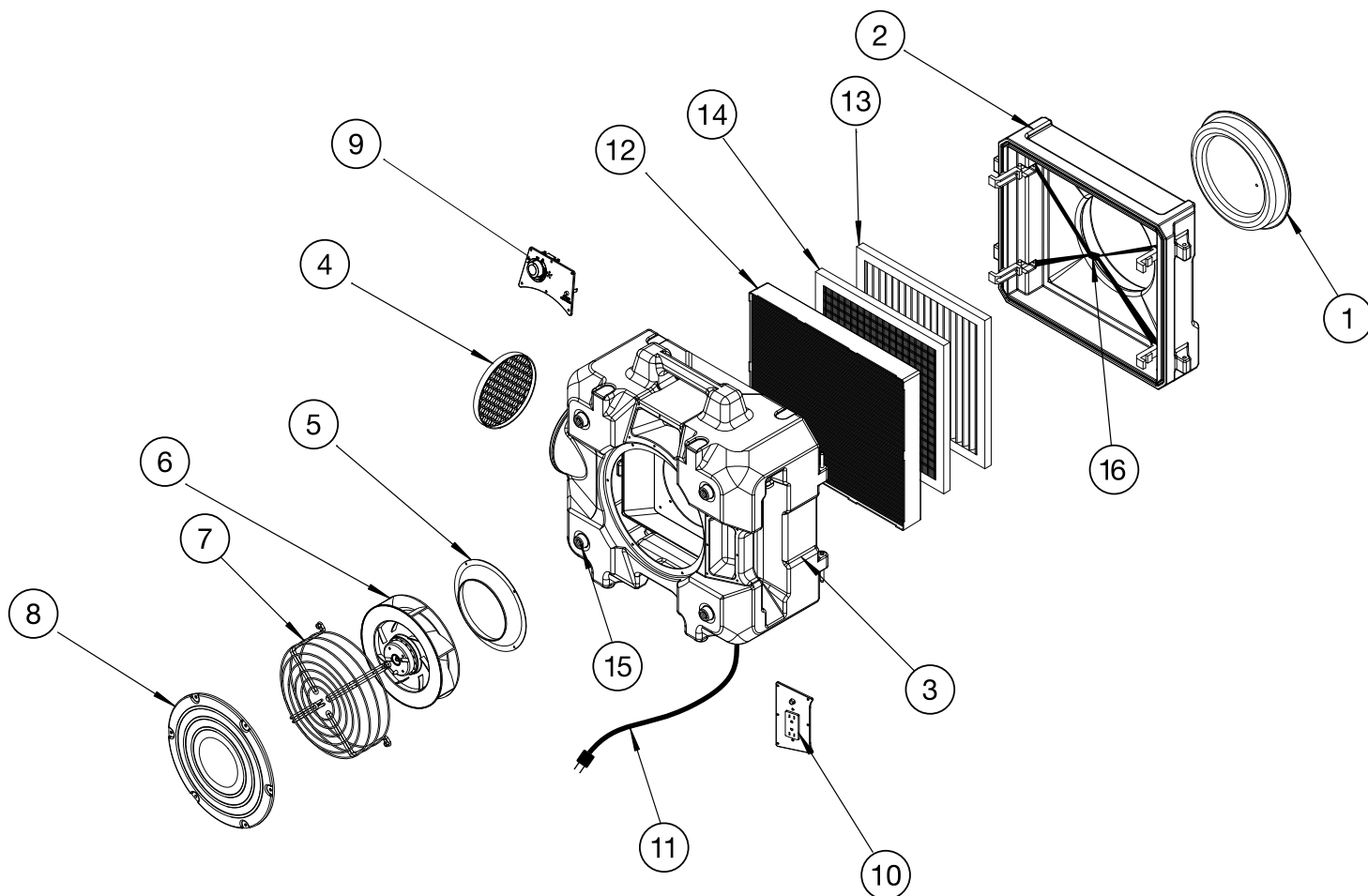
- 1) Unplug the Air Scrubber
- 2) Open door by releasing sliding latches outward, away from the air scrubber body.
- 3) Remove used filters and install new filters.
- 4) Latch door closed and plug the unit in a grounded outlet before operating.

AF500 SPECIFICATIONS

Fan Speed:	500-2400 rpm
Certifications:	ETL, CE, SSA
Motor Rating:	.33 hp
Power:	115 Volts, 60 Hz
Current:	2.5 amps
CFM:	250-500

Specifications are subject to change without notice.

OS500 PARTS LIST



Ref	Part Number	Description	Qty Req
1		Removable Dust Cover	1
2		Inlet Housing	1
3		Housing	1
4		Outlet Grill	1
5		Airflow Guide	1
6		1/3 HP Motor	1
7		Motor Support	1
8		Motor Seal Panel	3
9		Switch Panel	1
10		GFCI Panel	1
11		Power Cord - 30'	1
12		HEPA Filter	1
13		Pre-Filter	1
14		Optional Carbon Filter (Not included, Need to purchase separately)	0
15		Foot Pad	4
16		Pre-Filter Harness	1

TROUBLESHOOTING

PROBLEM	POSSIBLE CAUSE/SOLUTION
Air Scrubber does not turn on	<ul style="list-style-type: none">• Switch not turned on – turn on• Circuit breaker or GFCI has tripped - push reset button• No power to scrubber – make sure unit is plugged in; check power supply• Faulty switch - replace
Air Scrubber starts and then shuts off	<ul style="list-style-type: none">• Obstructed inlet/outlet – remove obstruction• Faulty motor - replace
Air Scrubber vibrates	<ul style="list-style-type: none">• Motor shaft is bent – replace motor• Fan blade is bent – replace• Excessive dirt built up on fan blade – clean by wiping with a slightly damp cloth.
Air Scrubber change light illuminated	<ul style="list-style-type: none">• HEPA filter needs replacement - replace• Air intake restricted – remove restriction or bends/kinks in ducting
Motor makes noises, but Air Scrubber won't turn on	<ul style="list-style-type: none">• Damaged/faulty motor or motor shaft – replace• Broken/loose wire to capacitor – tighten• Damaged/faulty capacitor – replace• Damaged housing/fan so fan will not spin – replace housing or fan wheel• Motor shaft set screw holding fan wheel is loose - tighten

Thank you for purchasing this product. Please read the instructions carefully and follow all warnings. All products are manufactured to be easy to use and provide years of worry free service when the recommendations in this manual are followed. Please call at with any questions or concerns.

LIMITED WARRANTY

offers a limited warranty to the original retail purchaser of this product (the "unit") against any defect in materials and workmanship as follows: For the first year from the date of retail purchase, at its option, will replace or repair unit without charge to the customer. Any repair or replacement of the unit will be warranted only for the balance of the original warranty period or ninety (90) days, whichever is greater. The following will void and/or are not covered under this limited warranty: a) Damage caused by improper use. b) Opening of the unit for any reason not authorized by c) Cosmetic damage or any damage caused by misuse, improper maintenance, connection to improper voltage supply, accidents, acts of God, abuse, negligence, damage caused during shipping, modifications, or attempted repair by anyone other than . d) Alteration or removal of factory- applied serial number. This limited warranty is not transferable to any subsequent purchaser.

TO OBTAIN WARRANTY SERVICE: In order to obtain warranty service, the owner must return the unit in suitable packaging, postage prepaid, to 5139 Southwestern Blvd., Hamburg, NY 14075, and include (i) proof of retail purchase, (ii) the date of the failure and (iii) a description of the failure. All shipping expenses to are the owner's responsibility.

The obligations of herein are granted in lieu of all other warranties, expressed or implied, including; but not limited to the warranties of merchantability of fitness for a particular purpose. The remedy provided in this warranty is exclusive and is granted in lieu of all other remedies. Some states do not allow limitations on how long an implied warranty lasts, so the above limitation may not apply to you.

In no event will be liable for loss of use of the product, loss of profits, direct damages, indirect damages, consequential damages, and/or incidental damages by reason of injury to any person, due to any defect or the malfunction of unit or any part(s) thereof, or for any other reason. Some states do not allow the exclusion or limitation of incidental or consequential damages so the above limitation or exclusion may not apply to you.

This warranty gives you specific, legal rights, and you may also have rights, which vary from state to state. Owner's acceptance of the product and use thereof constitutes acceptance of these terms.

Warranty return address:

----- Cut here and return with copy of receipt within 10 days of purchase. -----

Name: _____

Phone: () _____

Email: _____

City: _____

State: _____

Zip: _____

Model #: _____

Serial #: _____

Purchase Date: _____

Purchased From: _____