



Home

95-Pint Dehumidifier with Built-in Pump

USER GUIDE

IVALDH95PWWP

Thank you for purchasing the Ivation® 95-Pint Dehumidifier with Built-in Pump. This User Guide is intended to provide you with guidelines to ensure that operation of this product is safe and does not pose risk to the user. Any use that does not conform to the guidelines described in this User Guide may void the limited warranty.

Please read all directions before using the product and retain this guide for reference. This product is intended for household use only. This product is covered by a limited one-year warranty.

Coverage is subject to limits and exclusions. See warranty for details.

Features

- Removes up to 95 pints (approximately 11.9 gallons/45L) of moisture from the air per day
- Meets ENERGY STAR® specifications
- Removable, cleanable filter
- Adjustable humidity control 35% — 85%
- 2-speed fan
- 24-hour timer
- Full reservoir alert
- Auto defrost
- Auto shutoff
- Auto restart
- Built-in drainage pump
- Direct drain option for continuous operation
- Casters for easy portability

ENERGY STAR and the ENERGY STAR mark are registered trademarks owned by the U.S. Environmental Protection Agency.

ENERGY STAR products are third-party certified by an EPA-recognized Certification Body.

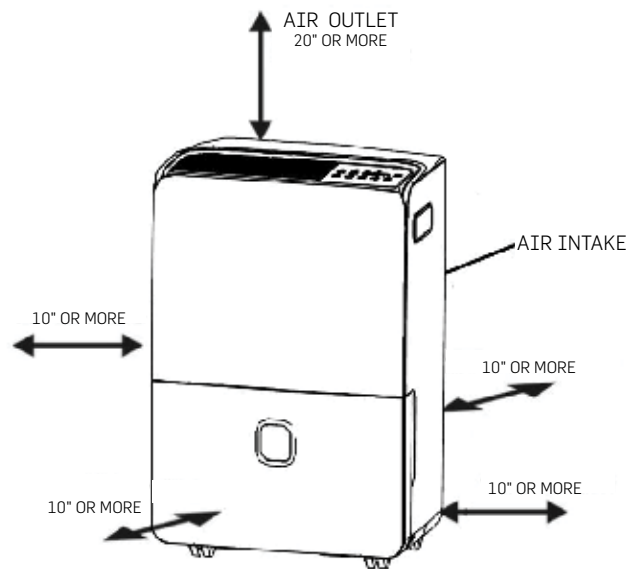
Safety Precautions

To prevent injury to the user or other people and property damage, the following instructions must be followed.

- Use this product only for its intended purpose.
- This unit is designed to operate in an environment of 41°F (5°C) — 96°F (35°C).
- Do not allow children to operate this unit.
- Do not exceed the unit's rated power.
- Do not pause the unit by turning off the power.
- Do not use a damaged or unspecified power cord.
- Do not operate the unit if the cord or plug are damaged.
- Do not use extension cords or adapters.
- Do not modify the cord length or share the outlet with other appliances.
- Do not force casters to move over carpeting or move the unit while water is in the reservoir.
- Do not handle the plug with wet hands.
- Do not operate the unit in tightly enclosed spaces such as closets unless there is adequate air circulation.
- Do not install the unit in a place where it may be exposed to combustible gas or where chemicals are handled.
- Do not place the unit near a heat source such as radiators, clothes dryers, heaters, ovens, etc.
- Disconnect the power if unusual sounds, smells, or smoke come from the unit.
- Never attempt to take apart or repair the unit.
- Before cleaning the unit, always turn off the power and unplug it.
- Do not drink or use the water drained from the unit.
- Do not remove the water reservoir during operation.
- Do not place the unit in a place where it may become wet or damp.
- Do not use the unit near a bath, shower, or swimming pool.
- Do not use the unit outdoors or in a greenhouse.
- Always place the unit on a level, stable section of the floor.
- Do not cover or obstruct the intake or exhaust vents.
- Keep out of reach of children and pets.
- Never insert fingers or other objects into the vents or openings.
- Do not place heavy objects on the unit or the power cord.
- Do not climb on or sit on the unit.
- Do not operate the unit without the air filter.
- Always insert the filters securely. Clean the filter once every two weeks.
- Do not run cord under carpeting or cover cord with throw rugs, runners, or similar coverings.
- Do not run cord under furniture or appliances or use in high-traffic areas where it may become a tripping hazard.
- To reduce the risk of fire or electric shock, do not use this unit with any solid-state speed control device.
- To avoid damage due to lightning, turn the power off and disconnect the unit in the event of a thunderstorm.
- If water enters the unit, turn it off and disconnect the power. Contact a qualified service technician.
- If the appliance is knocked over during use, immediately turn off the unit and unplug it from the main power supply. Visually inspect the unit to ensure there is no damage. If you suspect the unit has been damaged, contact a technician or customer service for assistance.
- Always contact an authorized service technician for repair or maintenance of this unit.

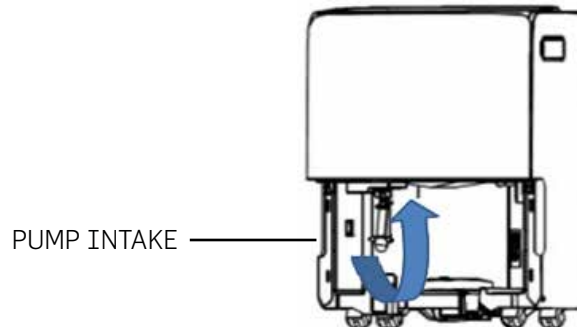
Correct Placement

Place the unit with proper clearance from walls, furniture, or window coverings. Place the unit on a hard, level surface. Close doors and windows in the room where the dehumidifier is operating.



IMPORTANT!

The pump intake mechanism is a plastic rod with a metal mesh filter at the end, located on the inside left side of the unit. It will drop down into the reservoir when the pump feature is activated. Whenever replacing the water reservoir after emptying it, make sure the pump rod is in its horizontal position or the water reservoir will not install properly.

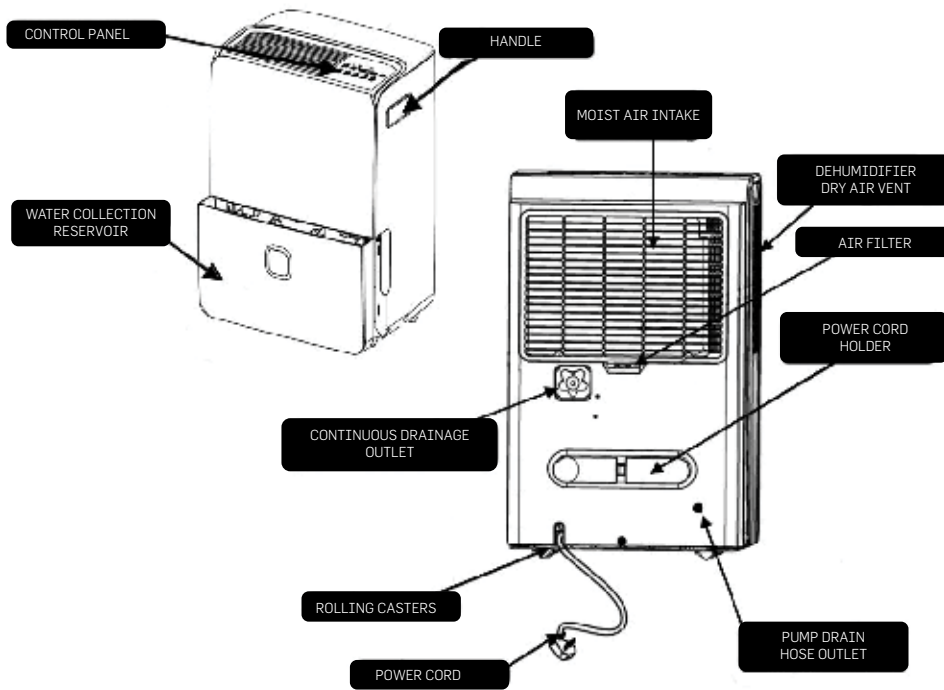


Quick Start Guide

1. Place the unit on a hard, level surface away from obstructions.
2. Close all doors and windows in the room.
3. Slide the water collection reservoir out toward you.
4. Remove any screws, hoses, or other items that may have been packed inside the reservoir.
5. Check that the pump intake rod has not dropped down. If it has, push it into its horizontal position.
6. Slide the reservoir back into position.
7. Plug the power cord into a proper receptacle. Do not use extension cords or adapters. Do not operate another appliance from the same electrical outlet.
8. Press the power button to turn the machine on. It is recommended that you let the unit run for 24 hours upon first operation.
9. To set a preferred humidity level, please see the "Setting the Humidity" section in this guide.
10. To set auto start and stop times, please see the "Setting the Timer" section in this guide.
11. To increase the fan speed, press the Turbo button.

Parts and Functions

(Illustrations for demonstration purposes only. Your unit may look slightly different.)



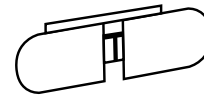
20" Continuous Drain
(Gravity) Hose



16.5 Ft. Pump
Drain Hose

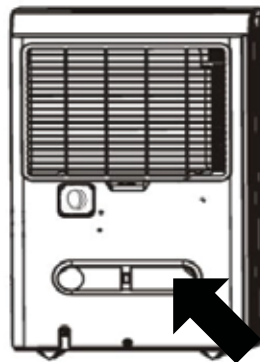


Power Cord
Holder

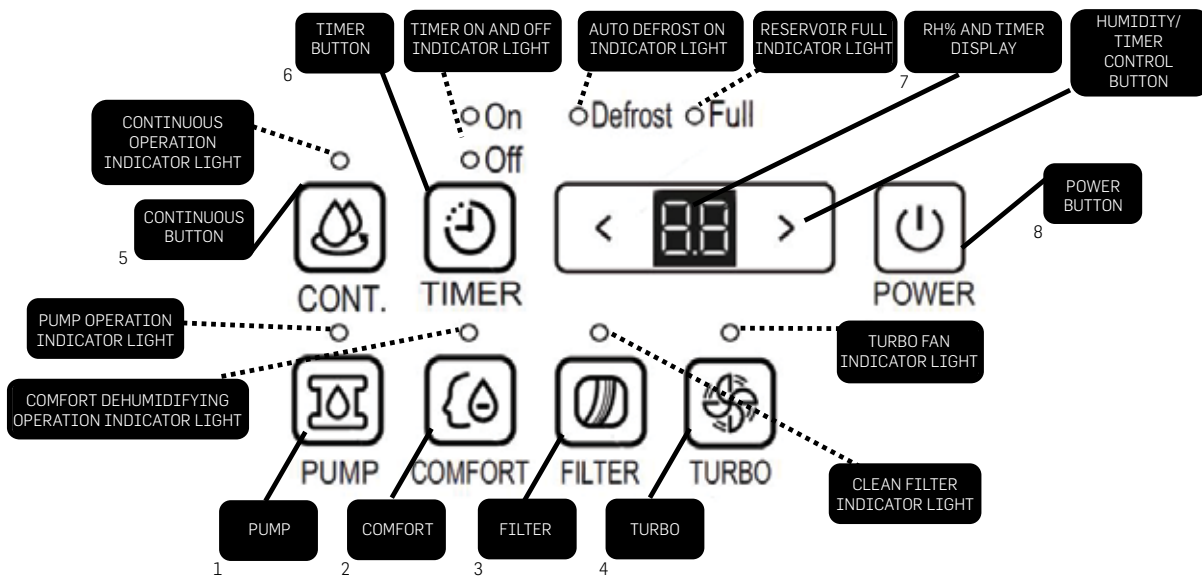


Power Cord Holder

Install the power cord holder in the back of the unit. When the unit is not in use, unplug the cord and wrap it around the holder for secure storage.



Control Panel



Operation

- When running the unit for the first time, operate the unit continuously for 24 hours.
- This unit is designed to operate within ambient temperature of 41°F (5°C) – 96°F (35°C).
- If the unit has been switched off and needs to be switched on again, please allow at least 3 minutes before restarting. (The compressor circuit has an automatic 3-minute time delayed start if the appliance is turned off and on quickly to prevent overheating of the compressor and possible circuit breaker tripping.)
- Make sure the water collection reservoir is installed correctly; otherwise the appliance will not turn on.
- Indoor relative humidity should ideally be kept between 35%RH and 60%RH depending on the ambient temperature.
- Clean the air filter regularly to maintain optimal performance.

1. Pump Button

Press to activate pump operation. The pump indicator light will illuminate.

NOTE: Make sure the pump drain hose is installed into the unit and the continuous drain hose is removed from the unit before pump operation is activated. When the reservoir is 3/4 full, the pump will activate. Do not use this feature when the outdoor temperature is equal to or less than 32°F (0°C).

2. Comfort Button

Press to activate continuous dehumidifying operation. The comfort indicator light will illuminate.

In the Comfort mode, the unit will automatically control room humidity between 45% – 55% according to the room temperature. Note that the humidity cannot be manually set while in this mode.

To stop the mode, press the Comfort button and set the desired humidity level.

3. Filter Button

The filter LED light will illuminate after approximately 250 hours of operation to remind you to clean the air filter to obtain maximum performance and efficiency. To reset after cleaning the filter, press the Filter button and the light will go off.

4. Turbo Button

Press to select either high ("Turbo") or normal fan speed. Choose Turbo operation for maximum moisture removal.

5. Cont. Button

Press to set the dehumidifier to run continuously without a timer. The continuous mode light will turn on. To stop continuous operation, press the Cont. Button and set the desired humidity level.

6. Timer Button

Press to activate the timer function for automatic start or stop. Use the left < and right > buttons to enter desired times in 0.5 hour increments, following the instructions in the "Setting the Timer" section.

7. LCD Display and Left < / Right > Buttons

The display shows the humidity settings and the auto on/off time settings as they are being programmed, then defaults to displaying the actual room humidity level.

8. Power Button

Turns the unit on and off.

Automatic Features

- Auto shutoff: The unit will automatically shut off when either the reservoir is full or the set humidity is reached. Wait 3 minutes before resuming operation.
- Auto defrost: When frost builds up on the evaporator coils, the compressor will cycle off and the fan will continue to run until the frost evaporates. Defrost time may vary. If the dehumidifier freezes up, turn the appliance off for few hours and then restart. The appliance will not operate satisfactorily if the room temperature is below 41°F (5°C).
- Full reservoir indicator: The appliance will run continuously until the set RH% is reached or when the reservoir is full. When the reservoir is full, the Full indicator light will illuminate and the dehumidifier will stop operating. Remove and empty the reservoir and replace it in its proper position. The unit will start operating again.
- Auto restart: If the power is cut unexpectedly, the unit will restart with the previous settings when power resumes.

LED Display

Shows the set humidity % level from 35% to 85%; then shows the actual room humidity % ($\pm 5\%$ accuracy) from 30%RH (relative humidity) to 90%RH.

Also shows the Auto Start/Stop Time (0 –24 hrs.)

Error Codes

The following codes may appear on the LED display:

Error Codes	
AS - Humidity Sensor Error	Unplug the unit and plug it back in.
ES - Temperature Sensor Error	Unplug the unit and plug it back in.
P2 - Water Collection Reservoir is full	Empty the reservoir.
EC - Unit Malfunction	Please make sure the environment temperature is between 41°F (5°C) and 96°F (35°C).
E3 - Unit Malfunction	Unplug the unit and plug it back in.
EB - Water Collection Reservoir Error	Reservoir is removed or not positioned correctly.

Humidity Setting

- The humidity level can be set between 35% RH and 85% RH in 5% increments. Press the left < and right > buttons to lower the % number for drier air or to raise the % number for moister air. You will see the numbers in the LCD display.
- Once the humidity level is set, the LCD display will show the actual room humidity level ($\pm 5\%$ accuracy).
- The dehumidifier will cycle on and off in order to maintain the selected humidity level.

Continuous Operation

- To run the dehumidifier continuously regardless of the relative humidity in the room, press the Cont. button.
- The "Cont." indicator light will illuminate.
- The unit will run continuously until the water reservoir is full.
- To stop continuous operation, press the Cont. button again and set a relative humidity level.

Setting the Timer

You can program the dehumidifier to start or stop automatically at a prescribed time between 0.0 and 24 hours. Press the timer button to begin the auto start or auto stop function.

- Setting Auto Start and Stop Times

1. Turn the unit off.

2. Press the Timer button. The Timer On indicator light will illuminate. This indicates that the Auto Start function is initiated. (If you press the Timer button again, the Timer Off indicator light will illuminate.)
3. Press or hold the left < and right > buttons to enter a time interval between 0.0 and 24 hours. Time will increase or decrease in 0.5 hour increments up to ten (10) hours, and thereafter in one (1) hour increments up to 24 hours.
4. The selected start time will show in the LCD display in a few seconds. The LCD display will then automatically revert to showing the room humidity level.
5. To program an automatic stop time, press the Timer button again (the Timer Off indicator light will illuminate) and repeat the steps above.

• Setting Auto Stop When Unit is Running

1. Press the Timer button. The Timer Off indicator light will illuminate. This indicates that the Auto Stop function is initiated.
2. Press or hold the left < and right > buttons to enter a time interval between 0.0 and 24 hours. Time will increase or decrease in 0.5 hour increments up to ten (10) hours, and thereafter in one (1) hour increments up to 24 hours.
3. The selected stop time will show in the LCD display in a few seconds. The LCD display will then automatically revert to showing the room humidity level.

NOTE:

- When the Auto Start and Auto Stop times are set within the same program sequence, the Timer On/Off indicator lights illuminate together signaling that both on and off times are now programmed.
- Turning the unit on or off at any time or adjusting the timer setting to 0.0 will cancel the Auto Start/Stop function.
- When LED display window displays the code P2, the Auto Start/Stop function will also be canceled.

Removing Collected Water

Collected water can be removed via 3 drainage options: manual drain, gravitational drain, and condensate pump drain.

1. Manual

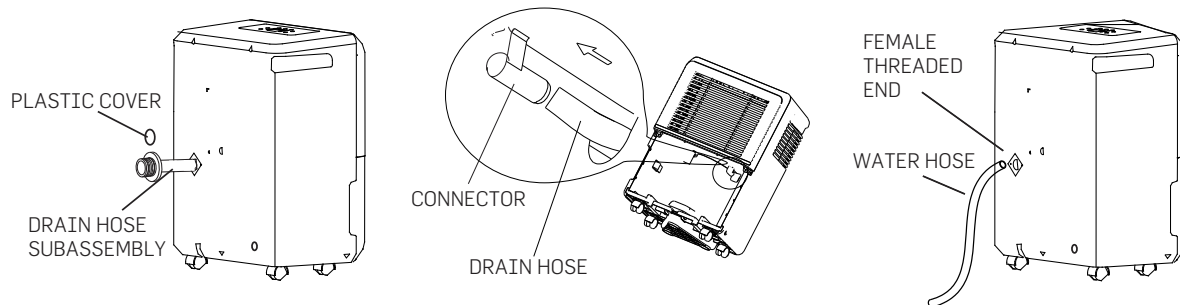
Moisture removed from the air is collected in the water reservoir. When the reservoir is full, the Full indicator light will illuminate and the unit will stop operation. Remove and empty the reservoir. **NOTE:** If the pump rod drops down when you remove the reservoir, push it back into its horizontal position or the water reservoir will not install properly.

2. Continuous Draining (Gravitational)

Water can be automatically emptied into a floor drain by attaching a hose with a female threaded end (not included) to the continuous drain hose.

- Remove the plastic cover from the drain outlet in the back of the unit. Water may drip from the outlet if the dehumidifier was previously used.
- Remove the water reservoir. Insert drain hose through the drain outlet in the back of the unit. Connect it to the connection point inside the unit and press it securely into the place.
- Tighten the adapter and the unit with two screws (not included).
- Install the female threaded end of the water hose into the adapter, then lead the water hose to the floor drain or a suitable drainage facility.

NOTE: Make sure the connection is tight and there are no leaks. The floor drain or other suitable drainage facility should be lower than the drain outlet of the unit. When the continuous drain feature is not being used, remove the drain hose from the outlet.

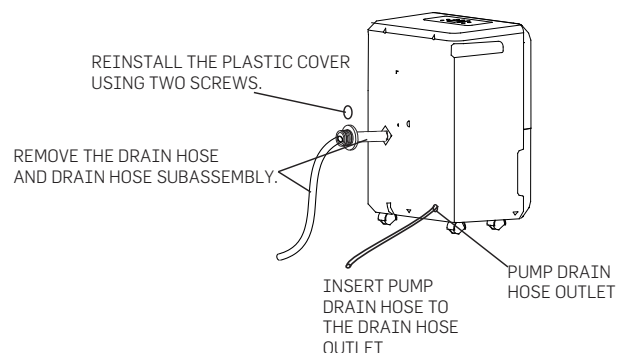


3. Pump Draining

Water can be pumped from the unit into a floor drain or a suitable drainage facility, and also pumped up with approximately 15 ft. of vertical lift. When activated, the pump will begin to operate when the reservoir is 3/4 full.

- If a water drain hose has been used for continuous gravitational draining, remove it and the drain hose assembly. Place the cover back onto the outlet.
- Insert one end of the pump drain hose into the pump drain hose outlet. Lead the other end of the hose to a suitable drainage facility.
- Press the pump button on the control panel. Some operational noise for the first 3 – 5 minutes is normal.

NOTE: Do not use this feature when the outdoor temperature is equal to or less than 32°F (0°C) as discarded water may freeze and damage the unit.



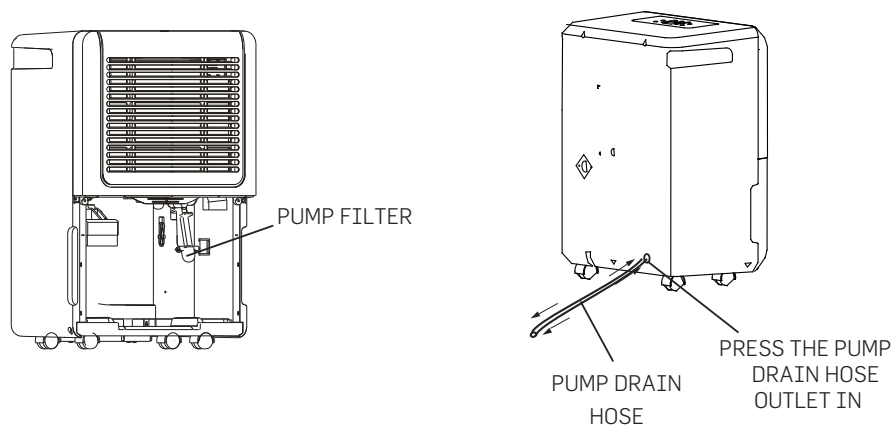
NOTE: Do not use this feature when the outdoor temperature is equal to or less than 32°F (0°C) as discarded water may freeze and damage the unit.

NOTE: In the event of a malfunction, the pump operation light will blink. Turn off the unit and unplug it from the power source. Check for the following:

- The pump filter is dirty
- The pump drain hose is kinked or blocked
- The pump drain hose connection leaks
- The pump drain hose has dropped
- The reservoir is full

Make sure to empty the reservoir once a week when using the pump draining feature.

When the pump draining feature is not being used, press the pump drain hose outlet in and take the pump drain hose out. Take care that water in the pump hose does not drip onto the floor.



Care and Maintenance

- Turn the unit off and unplug it from the power source before cleaning.
- Do not use harsh detergents or chemicals to clean the exterior of the unit. Wipe with a clean, damp cloth.
- Remove and wash the reservoir about every 2 weeks. Do not place in dishwasher.
- Remove and clean the air filter at least every 30 days. Use a vacuum cleaner or tap the filter lightly to remove loose dust and dirt. Rinse the air filter under warm or cold running water. Let filter dry thoroughly before reinserting. Do not operate the unit without the air filter.
- To clean the pump filter: Remove the reservoir. Remove the pump filter and clean with water.

Storage

- Turn the unit off and wait 1 day before emptying the reservoir.
- Clean the main unit, reservoir, and air filter and let dry completely.
- Wrap the power cord around the holder on the back of the unit.
- Cover the unit to protect it from dust and moisture.
- Store the unit in a cool, dry, well-ventilated area.

Troubleshooting

Problem	Possible Causes
Unit does not start	<p>Make sure the power cord and plug are not damaged and that the plug is pushed completely into the wall socket.</p> <p>Check the fuse/circuit breaker box.</p> <p>Reservoir may be full.</p> <p>Reservoir not in the proper position.</p> <p>Unit has cycled off because the desired humidity level has been reached.</p>
Unit does not operate efficiently/runs too much	<p>Enough time to dry the air has not been allowed.</p> <p>Vents or hoses may be blocked.</p> <p>The humidity selected may not be low enough.</p> <p>Doors or windows in the room are open.</p> <p>Room temperature is too low (below 41°F/5°C).</p> <p>A kerosene heater or other appliance is giving off water vapor in the room.</p> <p>Air grilles may be obstructed or dirty.</p> <p>Room area is too large.</p>
The unit makes a loud noise while operating	<p>The air filter is clogged.</p> <p>The unit is tilted or not placed on a level surface.</p>
Frost appears on the coils	This is normal. The Auto Defrost feature will remove the frost.
Water leaking from unit	<p>Hoses or connectors may be loose.</p> <p>The drain plug in the back of the unit has been removed when the reservoir is being used to collect water.</p>
Pumping indicator light blinking	<p>Pump filter may be dirty or clogged.</p> <p>Pump drain hose may be obstructed or kinked.</p>
Unit is operating but room is not dry enough	<p>The humidity setting may be too high. We recommend setting the RH% to at least 10% lower than the current RH%.</p> <p>Ensure there is at least 10" of clearance for proper ventilation.</p> <p>The appliance will not operate satisfactorily if the room temperature is below 41°F/5°C.</p> <p>Close windows or doors.</p>

Specifications:

Rated power: 115V, 60Hz
 Power input: 680W
 Rated current: 6.8A
 Refrigerant: R410A/14.64 oz.
 Moisture removal: 95 pints/day
 EEV: 2.0L/kW.H
 Design pressure: 540PSIG/300PSIG
 Airflow: 457 – 482m³/h / 269 – 284 CFM
 Reservoir capacity: 21 pints (10L)
 Noise level: 58/56dbA
 Selectable relative humidity range: 35% – 85%
 Environment ambient temp: 41°F (5°C) – 95°F (35°C)
 Dimensions: 18.8" x 14.2" x 24.6" (47.7 x 36 x 62.5cm)
 Weight: 60.6 lbs. (27.5kg)

Customer Service
 info@myivation.com
 866-849-3049